



Product Position Statement

Integra Family Batch Product

December 10, 2010

The following Product Position Statement Document includes all software versions (Integra V8.5.0 through 8.6.5.2) and all hardware models (Devicenet and Ethernet) of the Integra Family.

Position Statement

Command Alkon has always taken pride in the ability to update/upgrade/convert the existing hardware to support the newest software technology. The Integra batch product line is no exception, as Command Alkon will offer a migration path to the industry leading software platform, COMMANDbatch, for the existing Integra Hardware when possible.

Command Alkon will simultaneously offer a software migration path to COMMANDbatch until **December 31, 2014** for selected Integra models that have been maintained under a telephone support contract. Note that replacement of some Integra hardware may be required to implement the COMMANDbatch conversion.

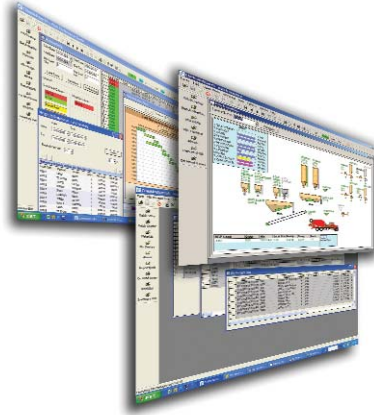
Integra Batch Support Position

Software Version 8.50 – 8.6.5.2		
Event	Applicable Date	Definition
End of Sales	December 31,2010	Command Alkon will no longer accept orders for new system purchases of this product after this date.
Change in Per Call Support	June 30 ,2010	All sites will be required to have a minimum annual telephone support contract after this date for product support. Please contact inside sales for more information.
End of Life - Feature Enhancement	December 31,2010	After this date, the product will not have any new features or enhancements added. Support will be available for your current version until the "End of Life - SW Support" date.
End of Life - Migration or Upgrade	December 31,2010	After this date, Command Alkon will no longer accept orders for upgrades to the product hardware or software.
End of Life - HW Support		Support for the Integra Batch Hardware is not offered. The Integra Batch Hardware allows the customer to purchase replacement items as needed.
End of Life - SW Support	June 30,2010	All Software Support contracts will terminate as of this date. Annual Telephone support contracts will be available until End of Life 24/7 Phone. Any software contract beyond June 30, 2011 will be prorated to this date.
End of Life - 24/7 Phone	December 31,2014	All 24/7 (aka Enhanced) Telephone Support contracts will terminate for this product as of this date. No new telephone support contracts will be written less than one year prior to this date.
End of Life - Product	December 31,2014	After this date, the product is considered obsolete and no telephone support will be available from Command Alkon.

Please contact your Command Alkon Representative at 1-800-624-1872 for more information.

COMMANDbatch Delivers

Quality You Can Count On
Superior Productivity & Performance
Advanced Administration & Integration
Remote Plant Monitoring & Tune Up
Remote Diagnostics & Troubleshooting
Remote Batching & Mix Design Changes
Migration Paths from Legacy Systems

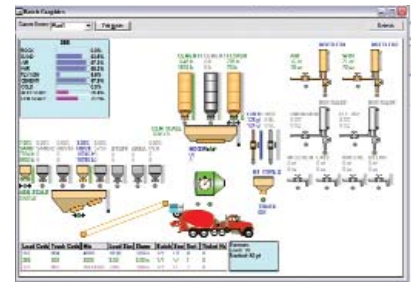


Order Entry and Projects

COMMANDbatch offers an extensive order entry system for taking orders for current and future days. This robust module includes Projects (limiting products authorized to use), special pricing, multiple price categories, automatically added items (e.g. fuel surcharge), environmental/tax authorities, additional products, discounts, etc.. Customers can be flagged to only have an order entered with a PO or a State Weight printing requirement.

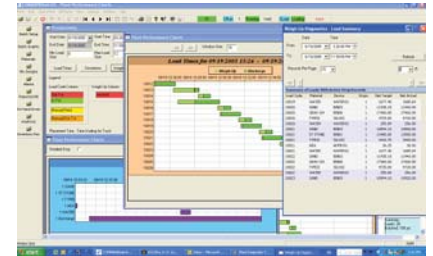
More than just graphics - Easy to Use

The Batch Graphics form allows quick links to other forms to make specific changes. Just right click on a silo or bin and select from the menu to hold a device, change material assignments, input incoming inventory or view the weighing characteristics. It's a breeze to train new employees.



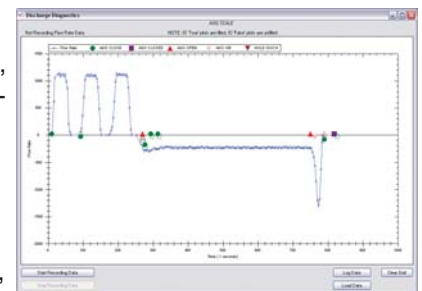
Productivity Module

The Productivity Module allows a quick graphical view of the day's production by load. At a glance you can see if a batch went "In Tolerance, Out of Tolerance, Manual, or Aborted." Operational data is displayed in a chart to let the operator see when the materials started, stopped, or jogged and when the discharge started and ended. This makes it possible to go back at a later date and review information that will allow the operator to tune a system for increased batching efficiency.



Second Client - Multiple Users

Additional terminals may be added to the system to allow for multiple users. Second client connections are available for up to 4 people per system and allow the remote operator full use of the system while not interfering with the batch operation. Remotely, orders may be entered, reports viewed, mix designs added or modified, materials/inventory added, credit statuses checked and flagged, sequence adjustments can be made, and troubleshooting can be performed..



Retrieve old Batch Weights

Batch Weights and Tickets are easily retrievable from past dates. They can be viewed, re-printed, and even emailed if required.

"COMMANDbatch is accurate, reliable, and easy-to-use. There's lots of information that can be determined at a glance. Our batch personnel can adjust mixes and materials on-the-fly and they know immediately when something is out of tolerance. With COMMANDbatch there's no more guesswork."

Billy Carroll
imi-Tennessee

Remote Batching

COMMANDbatch offers remote batching over a network connection using a Remote PC and a Driver Interface Box. The remote operator starts the batch when the driver is at the plant and "Authorizes" a batch. The driver has the ability to "Stop" the batch at any point with a "Stop" switch on the interface box. The Remote Operator has a virtual manual panel that allows the addition of materials as if an operator was at the system control panel.

Reports

COMMANDbatch offers 34 standard reports and a report writer that allows for customized reports. Reports may be exported to Excel, PDF or text files.

End of Day

End of Day procedures are customized to fit your needs. Any of the standard reports and functions can be included in your EOD procedures. With one click, COMMANDbatch will run a group of functions that include printing, backing up to a CD, Flash drive or a network drive.

COMMANDassist

System help is available at the click of an icon. Using a network connection the batch operator can send a help request to our office. This automatically opens a case in our customer service system with your company data and problem description. This increases security and shortens the time required to resolve a problem. Once the request is completed the network connection is closed not allowing any other intrusion into the system.

Plant Watcher

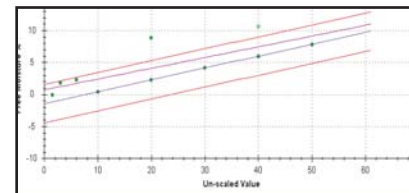
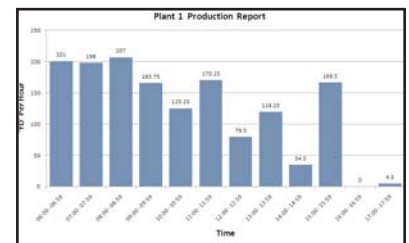
Add Plant Watcher to your COMMANDbatch implementation for automatic notifications to exception errors in the batch cycle. Drop records are accumulated over a 30-day period and displayed by material in a highlighted report showing if the materials were in or out of tolerance by weight and color. Maintenance can also be tracked and scheduled.

Precision Water System

The Precision Water System offers you the ability to calibrate and simultaneously measure up to 12 moisture probes for coarse aggregates up to 1" in size. The application stores and tracks all calibrations and adjusts the probe slope as required by the bake outs. The slope follows the material so that material assignments in a bin may be moved without having to move the probe and re-calibrating. Measuring the water content in all materials increases plant throughput and driver efficiency by reducing the need for slumping. A replacement probe can be installed and calibrated with one bake out.

Standard System

COMMANDbatch runs on Windows XP Professional /Windows 7 operating system, uses a SQL Express data base, is network ready, and supports multiple monitors.



"We have converted four of our legacy systems to COMMANDbatch. With Command Alkon's attention to preserving existing investments, the process was straightforward and cost effective. With these plants now converted to COMMANDbatch, we are using the advanced capabilities of this system, such as Remote Batching, to be more efficient and lower costs more than ever before."

Rob Hawn
All Ohio Ready Mix Concrete

